

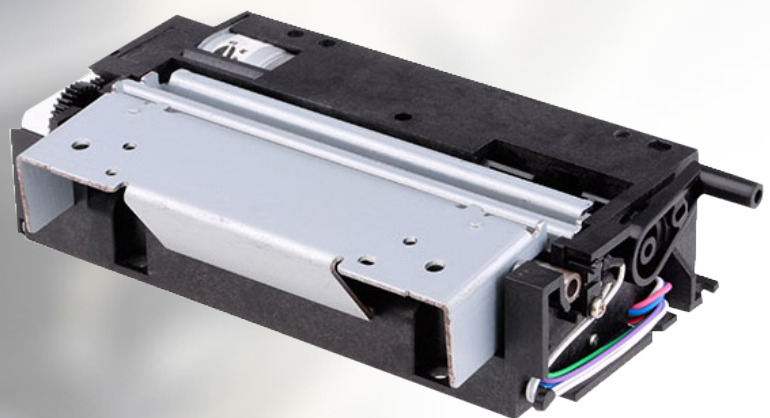
Thermal Printer Mechanism Series
With Classic Horizontal Structure

Printer Mechanism

Auto-cutter 3 Inch PT801S401

World's Best Product

- ▶ Printing speed: 250mm/s
- ▶ Wear life: more than 150km
- ▶ Easy paper loading
- ▶ Auto-cutter



3 Inch with auto-cutter PT801S401

Features

1. Low voltage supply

The voltage used to drive the thermal printer head is equal to the logic voltage, or is driven by a 5 V single power line, the range of operating voltage is 23.5V-25.2V

2. Compact and lightweight design

The mechanism is compact and light, dimensions: 110.2mm (width) * 54mm (depth) * 25.8mm (height)

3. Printing with high resolution

A high-density printer head of 8 dots/mm makes the good printing quality

4. High speed printing

According to driving power and sensitivity of thermal paper, set different printing speed required.

Printing speed is 250 mm/ s(max.)

5. Easy paper loading

Detachable rubber roller structure makes the paper loading easier

6. Low noise

Thermal line dot printing is used to guarantee low noise printing.



Specifications

Series Model	PT801S401	
Print Method	Direct line thermal	
Resolution	8 dots/mm	
Max. Printing Width	72mm	
Number of Dots	576	
Paper width	79.5±0.5mm	
Max. Printing Speed	220mm/s	
Paper Path	Curved	
Drive Voltage	24V ± 10%	
PEAK CURRENT	Head(Max.)	5.4A(26.4V/128dots)
	Motor	460mA
	Cutting Type	Full/Partial cut
RELIABILITY	Pulse Activation	100 million
	Abrasion Resistance	100KM
	Paper Cutting	1,000,000 cuts
Operating Temperature	0 - 50°C	
Dimensions(W*D*H)	102*64.0*44.8mm	
Weight	225g	
Compatible with	Seiko LTPF 347F	

Applications

- ECR/Financial POS
- Measuring device
- Vending Machines
- Gaming and Lottery
- Parking Meters
- Voting