

Thermal Printer Mechanism Series  
With Classic Horizontal Structure

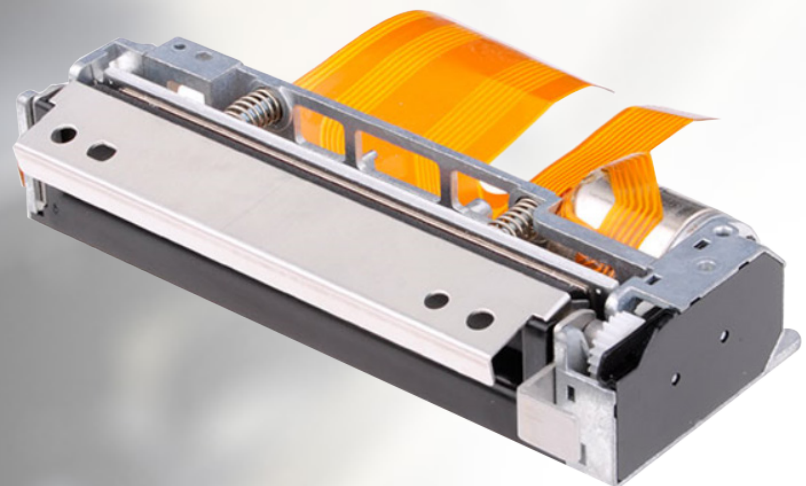
# Printer Mechanism

3 Inch  
PT726F

---

## World's Best Product

- Easy paper loading
- Compact and exquisite design
- Vertical (Curved path ) paper feeding



# 3 Inch Thermal printer mechanism series PT726F

## Features

### 1. Low voltage supply

The voltage used to drive the thermal printer head is equal to the logic voltage, or is driven by a 5 V single power line, the range of operating voltage is 24V-26.6V

### 2. Compact and lightweight design

The mechanism is compact and light, dimensions: 104.3 mm (width) \* 40.5mm (depth) \* 20.3mm (height)

### 3. Printing with high resolution

A high density printer head of 8 dots/mm makes the good printing quality

### 4. High speed printing

According to driving power and sensitivity of thermal paper, set different printing speed required.

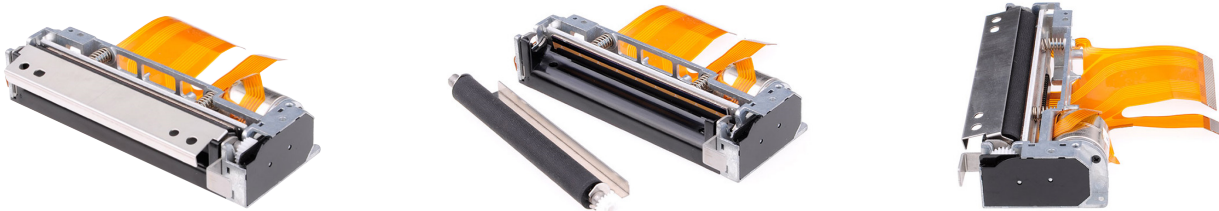
Printing speed is 200 mm/ s (max.)

### 5. Easy paper loading

Detachable rubber roller structure makes the paper loading easier

### 6. Low noise

Thermal line dot printing is used to guarantee low noise printing.



## Specifications

Series Model	PT726F	
Print Method	Direct line thermal	
Resolution	8 dots/mm	
Max. Printing Width	72mm	
Number of Dots	576	
Paper width	79.5±0.5mm	
Max. Printing Speed	200mm/s	
Paper Path	Curved	
Drive Voltage	24V ± 10%	
PEAK CURRENT	Head(Max.)	4.0A(24V/144dots)
	Motor	1.0 A
RELIABILITY	Pulse Activation	100 million
	Abrasion Resistance	100KM
Operating Temperature	0 - 50°C	
Dimensions(W*D*H)	104.3*40.5*20.3mm	
Weight	125g	
Compatible with	Fujitsu FTP-639MCL103	

- Ticketing
- ECR/financial POS
- Weighing scale
- Fire controller
- Measuring device
- Medical device
- Voting