

Thermal Printer Mechanism Series  
With Classic Horizontal Structure

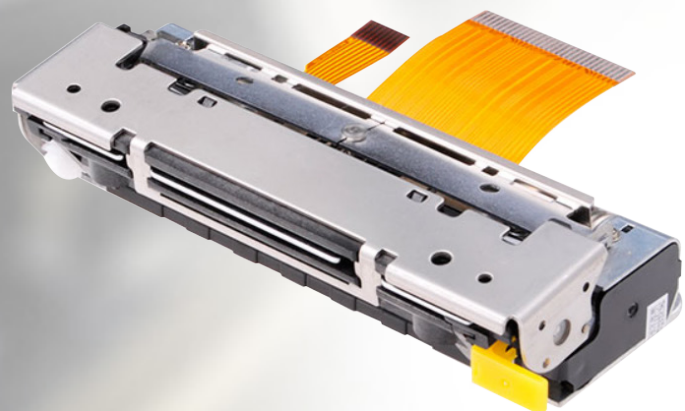
# Printer Mechanism

## Auto-cutter 3 Inch PT723F24401

---

### World's Best Product

- 24V power supply
- printing speed: 120mm/s
- Compact and exquisite design
- Easy paper loading
- Auto-cutter
- Curved path paper feeding



# 3 Inch with auto-cutter PT723F24401

## Features

### 1. Low voltage supply

The voltage used to drive the thermal printer head is equal to the logic voltage, or is driven by a 5 V single power line, the range of operating voltage is 24V.

### 2. Compact and lightweight design

The mechanism is compact and light, dimensions: 102.5mm (width) \* 42.4mm (depth) \* 22.3mm (height)

### 3. Printing with high resolution

A high-density printer head of 8 dots/mm makes the good printing quality

### 4. High speed printing

According to driving power and sensitivity of thermal paper, set different printing speed required.

Printing speed is 120 mm/ s(max.)

### 5. Easy paper loading

Detachable rubber roller structure makes the paper loading easier

### 6. Low noise

Thermal line dot printing is used to guarantee low noise printing.



## Specifications

Series Model	PT486F24401	
Print Method	Direct line thermal	
Resolution	8 dots/mm	
Max. Printing Width	72mm	
Number of Dots	576	
Paper width	79.5±0.5mm	
Max. Printing Speed	120mm/s	
Paper Path	Curved	
Drive Voltage	24V ± 10%	
PEAK CURRENT	Head(Max.)	2.2A(24V/144dots)
	Motor	1.0A
	Cutting Type	Full/Partial cut
RELIABILITY	Pulse Activation	100 million
	Abrasion Resistance	100KM
	Paper Cutting	500,000 cuts
Operating Temperature	0 - 50°C	
Dimensions(W*D*H)	102.5*42.4*22.3mm	
Weight	116g	
Compatible with	Fujitsu FTP637 MCL401	

## Applications

- POS printers
- Kiosks
- Vending Machines
- Gaming and Lottery
- Parking Meters
- Ticketing
- Voting