

Printer Mechanism

2 Inch
PT542F

WORLD'S BEST PRODUCT

- ▶ Compatible with Fujitsu FTP629-MCL103
- ▶ Optional knob
- ▶ Compact and exquisite design
- ▶ Easy paper loading
- ▶ Vertical (90°) paper feeding and horizontal (180°) paper feeding (optional)

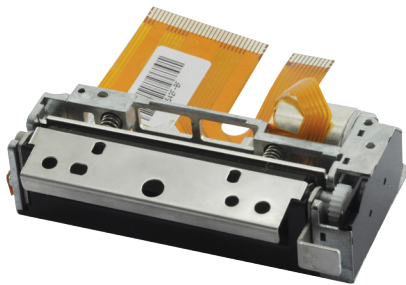


2 Inch

Thermal printer mechanism series

PT542F

Features



- 1. Low voltage supply**
The voltage used to drive the thermal printer head is equal to the logic voltage, or is driven by a 5 V single power line, the range of operating voltage is 24V-26.5V
- 2. Compact and lightweight design**
The mechanism is compact and light, dimensions: 82.3 mm (width) * 40.5mm (depth) * 20mm (height)
- 3. Printing with high resolution**
A high-density printer head of 8 dots/mm make the good printing quality
- 4. High speed printing**
According to driving power and sensitivity of thermal paper, set different printing speed required. Printing speed is 200 mm/ s (max.)
- 5. Easy paper loading**
Detachable rubber roller structure makes the paper loading easier
- 6. Low noise**
Thermal line dot printing is used to guarantee low noise printing.

Specifications

Printing method	thermal dot line printing	Power Supply	Printer Head	24V~26.5V, 1.4A (Average)
Paper feeding direction	90°/ 180°		Stepper motor	24V, 0.5A(max)
Dot structure	432 dots/line		Logic voltage	3.0V~5.25V, 0.05A(5V)(max)
Dot pitch	8 dots/mm	Electric life	more than 110,000,000 pulses (printing rate=12.5%)	
Printing speed	200mm/s(Max)	Wear life	more than 50km	
Printing width	54mm	Ambient condition		
Paper width	57mm±1mm	Operating temperature	0°C~50°C	
Paper thickness	60~100 μ m	Operating humidity	10~80% RH	
Paper loading method	hand paper loading	Storage temperature	-25° C~70° C	
Character size	12 x 24, 36 characters/line	Storage humidity	5~90% RH	
	24 x 24, 54 characters/line		Detection	
	8 x 16, 27 characters/line	TPH temperature	thermistor	
	16 x 16, 18 characters/line	Paper end / black mark	photo interrupter	
Dimensions (W×D×H)	82.3 x 40.5 x 20 mm			
Weight	100.4g			

Applications

- Bill counter/Coin Counter
- ECR/financial POS
- Weighing scale
- Fire controller
- Medical devices
- Taximeter
- Measuring device

