

Thermal Printer Mechanism Series  
With Classic Horizontal Structure

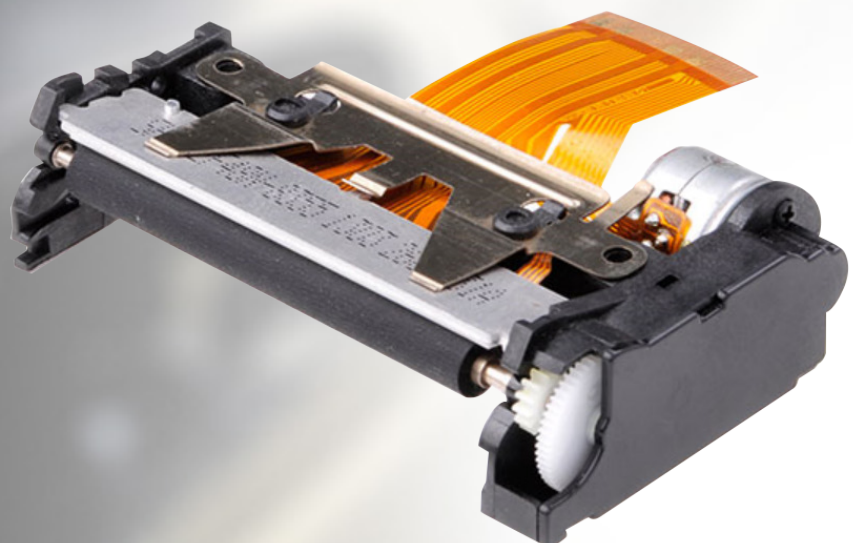
# Printer Mechanism

2 Inch  
PT48G

---

## World's Best Product

- Low noise, rugged and durable
- Printing speed: 100mm/s (8.5V)
- Easy paper loading
- Curved path paper feeding



# 2 Inch Thermal printer mechanism series PT48G

## Features

### 1. Low voltage supply

The voltage used to drive the thermal printer head is equal to the logic voltage, or is driven by a 5 V single power line, the range of operating voltage is 4.2V-8.5V, so this PT48G thermal printer mechanism can be driven by four to six pcs of NI-Cd batteries or Ni-MH batteries, or two pcs of Li-ion batteries.

### 2. Compact and lightweight design

The mechanism is compact and light, dimensions: (69.5)mm (width) \* (46.0)mm (depth) \* (19.0)mm (height).

### 3. Printing with high resolution

A high-density printer head of 8 dots/mm makes the good printing quality

### 4. High speed printing

According to driving power and sensitivity of thermal paper, you can set different required printing speeds.

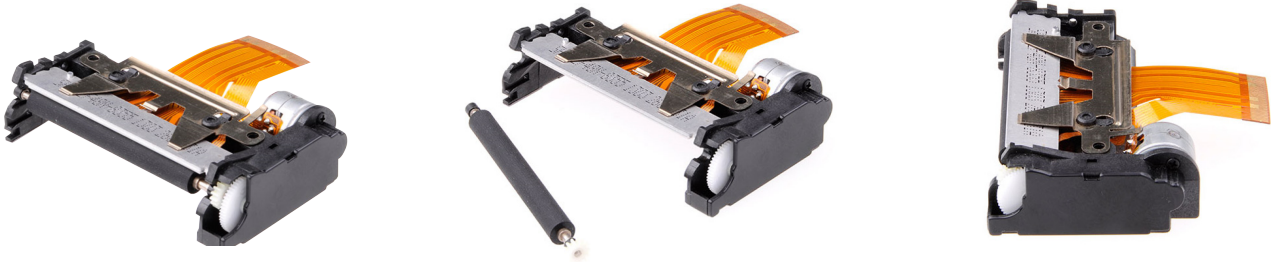
And PT48G thermal printer mechanism printing speed is 70 mm/ s (max.)

### 5. Easy paper loading

Detachable rubber roller structure makes the paper loading easier

### 6. Low noise

Thermal line dot printing is used to guarantee low noise printing.



## Specifications

|                       |                        |                   |
|-----------------------|------------------------|-------------------|
| Series Model          | PT48G                  |                   |
| Print Method          | Direct line thermal    |                   |
| Resolution            | 8 dots/mm              |                   |
| Max. Printing Width   | 48mm                   |                   |
| Number of Dots        | 384                    |                   |
| Paper width           | 57.5±0.5mm             |                   |
| Max. Printing Speed   | 100mm/s                |                   |
| Paper Path            | Straight               |                   |
| Drive Voltage         | 4.2V-9.5V              |                   |
| PEAK CURRENT          | Head(Max.)             | 2.3A(7.2V/64dots) |
|                       | Motor                  | Max. 1.0A         |
| RELIABILITY           | Pulse Activation       | 100 million       |
|                       | Abrasion Resistance    | 50KM              |
| Operating Temperature | 0 - 50°C               |                   |
| Dimensions(W*D*H)     | 69.3*46.0*19.0mm       |                   |
| Weight                | 31g                    |                   |
| Compatible with       | Fujitsu FTP-62DMCL-101 |                   |

## Applications

- Cash registers
- EFT POS terminals
- Gas pumps
- Portable terminals
- Measuring instruments and analysers
- Taxi meters