

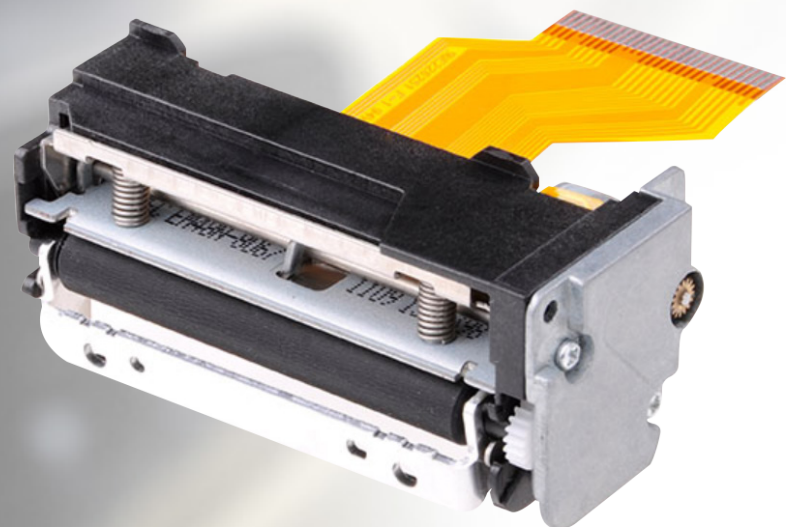
Thermal Printer Mechanism Series
With Classic Horizontal Structure

Printer Mechanism

2 Inch
PT48A

World's Best Product

- Low noise, sturdy and durable
- Printing speed:90mm/s(8.5V)
- Easy paper loading
- Curved path paper feeding



2 Inch Thermal printer mechanism series PT48A

Features

1. Low voltage supply

The voltage used to drive the thermal printer head is equal to the logic voltage, or is driven by a 5 V single power line, the range of operating voltage is 4.2V-8.5V, so four to six NI-Cd batteries or Ni-MH batteries can also be used. Two li-ion batteries can be used.

2. Compact and lightweight design

The mechanism is compact and light, dimensions: 69.2mm (width) * 28.3mm (depth) * 31.7mm (height)

3. Printing with high resolution

A high-density printer head of 8 dots/mm makes the good printing quality

4. High speed printing

According to driving power and sensitivity of thermal paper, set different printing speed required.

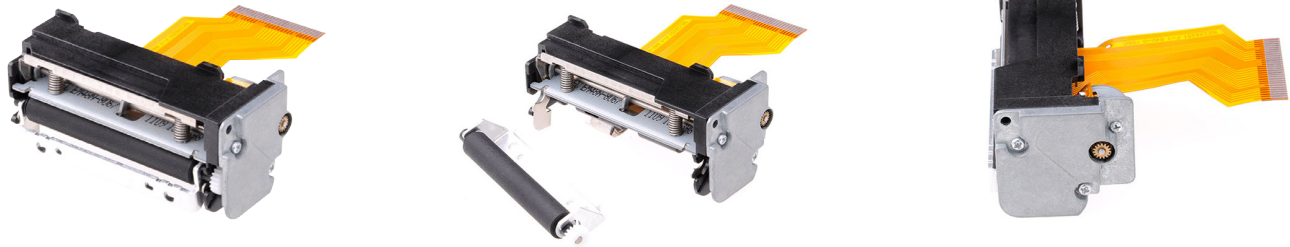
Printing speed is 90 mm/ s (max.)

5. Easy paper loading

Detachable rubber roller structure makes the paper loading easier

6. Low noise

Thermal line dot printing is used to guarantee low noise printing.



Specifications

Series Model	PT48A	
Print Method	Direct line thermal	
Resolution	8 dots/mm	
Max. Printing Width	48mm	
Number of Dots	384	
Paper width	57.5±0.5mm	
Max. Printing Speed	90mm/s	
Paper Path	Curved	
Drive Voltage	4.2V-9.5V	
PEAK CURRENT	Head(Max.)	2.3A(7.2V/64dots)
	Motor	600mA
RELIABILITY	Pulse Activation	100 million
	Abrasion Resistance	50KM
Operating Temperature	0 - 50°C	
Dimensions(W*D*H)	69.2*28.3*31.7m (exclude level of lock arm)	
Weight	42g	
Compatible with	PT48AS	Seiko LTPA 245M-384-E
	PT48AE	Epson M-T183

Applications

- Cash registers
- EFT POS terminals
- Gas pumps
- Portable terminals
- Measuring instruments and analysers
- Taxi meters