

# Printer Mechanism

2 Inch  
PT489S

---

## WORLD'S BEST PRODUCT

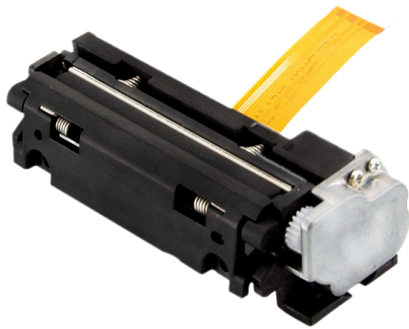
- ▶ Seiko LTPJ245 compatible
- ▶ Compact and exquisite design
- ▶ Easy paper loading
- ▶ High and low resistance (optional)
- ▶ 90° paper feeding



2 Inch

# Thermal printer mechanism series PT489S

## Features



### 1. Low voltage supply

The voltage used to drive the thermal printer head is equal to the logic voltage, or is driven by a 5 V single power line, the range of operating voltage is 4.2V-9.5V, so four to six NI-Cd batteries or Ni-MH batteries can also be used. Two li-ion batteries can be used.

### 2. Compact and lightweight design

The mechanism is compact and light, dimensions: 68.5mm (width) \* 31mm (depth) \* 22.0mm (height)

### 3. Printing with high resolution

A high-density printer head of 8 dots/mm make the printing clear and precise

### 4. High speed printing

According to driving power and sensitivity of thermal paper, set different printing speed required. Printing speed is 75 mm/ s (max.)

### 5. Easy paper loading

Detachable rubber roller structure makes the paper loading easier

### 6. Low noise

Thermal line dot printing is used to guarantee low noise printing.

## Specifications

Printing method	thermal dot line printing	Power Supply	Printer Head	4.2V~9.5V, 3.66A (9.5V) (max)
Paper feeding direction	90° vertical		Stepper motor	4.2V~9.5V, 0.6A (max)
Dot structure	384 dots/line		Logic voltage	2.7 V~5.5V, 0.05A (max)
Dot pitch	8 dots/mm	Electric life	more than 110,000,000 pulses (printing rate=12.5%)	
Printing speed	75mm/s	Wear life	more than 50km	
Printing width	48mm	Ambient condition		
Paper width	58mm	Operating temperature	-10°C~50°C	
Paper thickness	60~100 $\mu$ m	Operating humidity	20~85% RH	
Paper loading method	hand paper loading	Storage temperature	-25° C~60° C	
Character size	12 x 24, 32 characters/line	Storage humidity	5~90% RH	
	24 x 24, 16 characters/line		Detection	
	8 x 16, 48 characters/line	TPH temperature	thermistor	
	16 x 16, 24 characters/line	Paper end / black mark	photo interrupter	
Dimensions (WxDxH)	68.5 x 31.5 x 22 mm			
Weight	38g			

## Applications

- Cash register
- ECR/financial POS
- Weighing scale
- Fire controller
- Medical devices
- Taximeter
- Measuring device

