

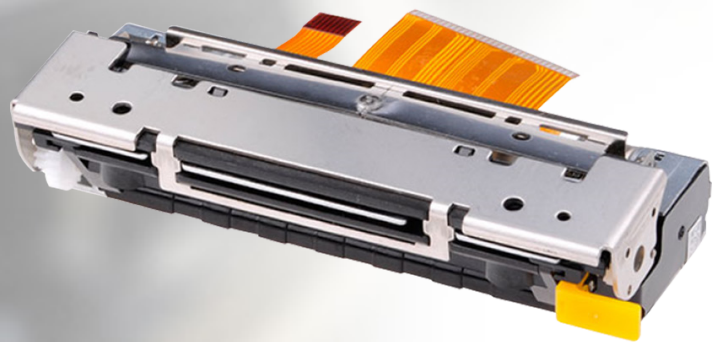
Thermal Printer Mechanism Series
With Classic Horizontal Structure

Printer Mechanism

Auto-cutter 2 Inch PT486F08401

World's Best Product

- 8.5V power supply
- Compact and exquisite design
- Easy paper loading
- Auto-cutter
- Curved path paper feeding



2 Inch with auto-cutter PT486F08401

Features

1. Low voltage supply

The voltage used to drive the thermal printer head is equal to the logic voltage, or is driven by a 5 V single power line, the range of operating voltage is 4.2V-8.5V, so four to six NI-Cd batteries or Ni-MH batteries can also be used. Two li-ion batteries can be used.

2. Compact and lightweight design

The mechanism is compact and light, dimensions: 80.8mm (width) * 42.4mm (depth) * 21.9mm (height)

3. Printing with high resolution

A high-density printer head of 8 dots/mm makes the printing clear and precise

4. High speed printing

According to driving power and sensitivity of thermal paper, set different printing speed required.

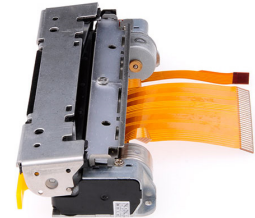
Printing speed is 70 mm/ s(max.)

5. Easy paper loading

Detachable rubber roller structure makes the paper loading easier

6. Low noise

Thermal line dot printing is used to guarantee low noise printing.



Specifications

Series Model	PT486F08401	
Print Method	Direct line thermal	
Resolution	8 dots/mm	
Max. Printing Width	48mm	
Number of Dots	384	
Paper width	57.5±0.5mm	
Max. Printing Speed	70mm/s	
Paper Path	Curved	
Drive Voltage	4.2V - 8.5V	
PEAK CURRENT	Head(Max.)	2.4A(7.2V/64dots)
	Motor	1.0A
	Cutting Type	Full/Partial cut
RELIABILITY	Pulse Activation	100 million
	Abrasion Resistance	50KM
	Paper Cutting	500,000 cuts
Operating Temperature	0 - 50°C	
Dimensions(W*D*H)	81.2*42.2*21.8mm	
Weight	97g	
Compatible with	Fujitsu FTP628 MCL401	

Applications

- ECR/Financial POS
- Package of counter
- Gas pumps
- Taxi meters
- Gaming and Lottery
- Fire controller
- Medical devices
- Measuring device