

Thermal Printer Mechanism Series  
With Classic Horizontal Structure

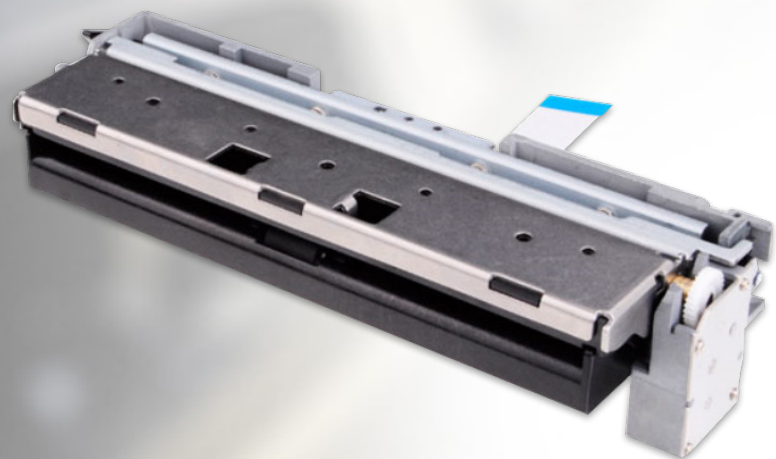
# Printer Mechanism

6 Inch  
PT1561P

---

## World's Best Product

- Easy paper loading
- Compact and exquisite design
- Curved path paper feeding
- 12V power supply
- Support label paper and thick thermal paper printing



# 6 Inch Thermal printer mechanism series PT1561P

## Features

### 1. Low voltage supply

The voltage used to drive the thermal printer head is equal to the logic voltage, or is driven by a 5 V single power line, the range of operating voltage is 12.0V-13.2V.

### 2. Compact and lightweight design

The mechanism is compact and light, dimensions: 180.5mm (width) \* 54.2mm (depth) \* 40.85mm (height)

### 3. Printing with high resolution

A high-density printer head of 8 dots/mm makes the printing clear and precise

### 4. High speed printing

According to driving power and sensitivity of thermal paper, set different printing speed required.

Max printing speed is 90 mm/ sec.

### 5. Easy paper loading

Detachable rubber roller structure makes the paper loading easier

### 6. Low noise

Thermal line dot printing is used to guarantee low noise printing.



## Specifications

Series Model	PT1561P	
Print Method	Direct line thermal	
Resolution	8 dots/mm	
Max. Printing Width	144mm	
Number of Dots	1152	
Paper width	149.5±0.5mm	
Max. Printing Speed	90mm/s	
Paper Path	Curved	
Drive Voltage	12V±10%	
PEAK CURRENT	Head(Max.)	2.64A(12V/64dots)
	Motor	500mA
RELIABILITY	Pulse Activation	100 million
	Abrasion Resistance	50KM
Operating Temperature	0 - 50°C	
Dimensions(W*D*H)	180.7*53.8*40.8mm	
Compatible with	N/A	

## Applications

- Weighing scale
- Water electrical system
- Medical devices
- Industrial control detecting instrument